



MOUNTAIN MOVER

NORTHRIDGE CHURCH

# SATURATE ROCHESTER

## WITH THE GOSPEL

The greater Rochester area has a longstanding history, vibrant culture, and natural beauty. For many of us, it's the people who make us call Rochester our home. At the same time, when we look around our communities, neighborhoods, schools, workplaces, and beyond, **we see so many people searching and longing for something more in life.** We don't have to look far to find people who have walked away from God, given up on Him, or rejected Him altogether, and continue to wrestle with the void of hope in their lives.

We are at a new juncture in the life of our church. We have the opportunity to walk toward the mess and bring the hope of Christ. We believe in saturating our city with the gospel of Jesus because He can change lives and the city.

We believe that through our campuses, we can create environments where people can read and understand the Bible, experience genuine community, and receive the hope and healing of the gospel all over Rochester. Right now, this feels like an insurmountable mountain in front of us.

Yet, God has placed a new opportunity in front of us through the Brighton Campus that will challenge our faith and call us to action. **That is why we are calling this initiative Mountain Mover.** We believe that God can change hearts and this city, but to move that mountain, He calls us to greater faith.

"For truly I tell you, if you have faith the size of a mustard seed, you will say to this mountain, 'Move from here to there,' and it will move; and nothing will be impossible for you."

*Matthew 17:20-21*

Together, let's declare the hope we have to those who feel hopeless. Let's truly make a difference for the sake of Christ and saturate our area with the grace and truth of the gospel. As we start this journey together, what part will you play? As you consider how God is asking you to participate in Mountain Mover, we hope this resource will help you seek Him. It's designed to guide you toward a decision that is another step on the journey to becoming more like Jesus. I pray you will join my family and me as we deepen our faith and see God move mountains!



DREW KARSCHNER  
Lead Pastor



# IMAGINE

## Imagine the greater Rochester area saturated with the Gospel.

How do you think the power of God could impact your community? Can you see it changing relationships? Do you believe it can impact poverty? Do you believe it can change our community?

If you are a follower of Jesus, you know the healing, peace, hope, and joy you find when your life is saturated with the gospel. We're calling you and our whole church family to catalyze a movement to permeate the greater Rochester area with the gospel and see mountains moved.

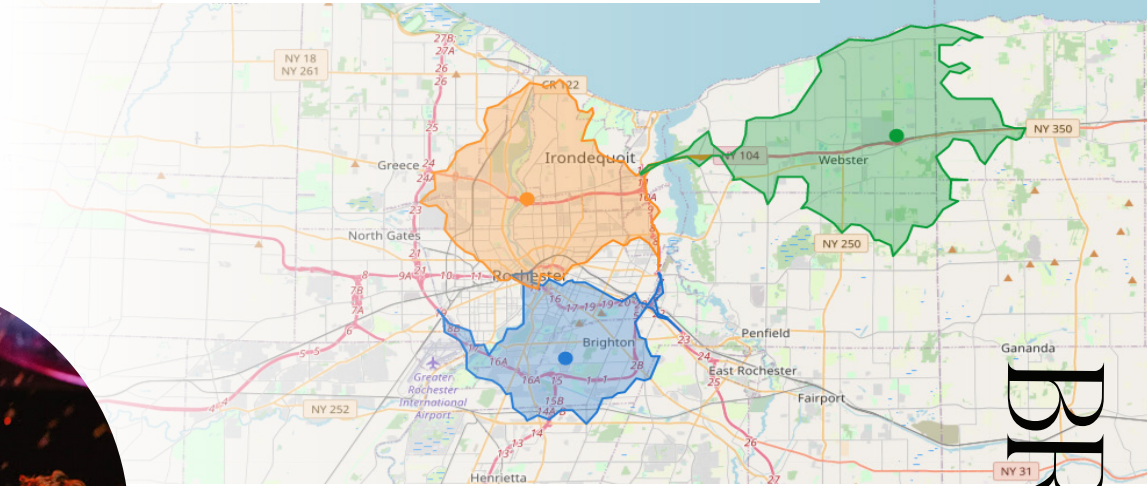


For 134 years, we have seen God move so many mountains in people's lives at Northridge (Psalm 126:3). We've seen Him destroy strongholds, overcome addictions, restore marriages, bring families back together, and give life to those who once had no hope.

Our primary strategy to share the gospel is to launch campuses to be missional outposts and homes for the hopeless. Our heart and goal are to see a Northridge campus within a 10-minute drive for everyone in the greater Rochester area.

We want the hope of the gospel to permeate our city.

The three colored areas represent a 10-minute drive time to each physical Northridge campus.



Following the unforeseen closures of our portable campuses in Greece and Henrietta during Covid, the Oversight Team has been looking at various properties for a possible permanent campus. While searching and praying for a suitable building on the south or west side of Rochester, we came across the listing for 2090 S. Clinton.

**The owners of the 2090 S. Clinton church building believe in our vision for saturating Rochester with the gospel so much that they offered us a 24% discount on their list price.** The Oversight and Stewardship Teams visited the property, prayed, and unanimously agreed that this could be the home for many on the city's south side. Over 95% of our members prayerfully voted to purchase this building, so we proceeded with the purchase.

BRIGHTON



**One of the opportunities we have at the Brighton Campus is to reach and care for a demographic that is increasingly less likely to go to church - those who are under 30.**

The Brighton Campus is accessible within a 10-minute drive for over 42,000 students from three local colleges and universities, giving it the potential to see God move in the next generation.

The cross-section of this community is highly diverse, not only in age but also in income level, educational background, race, and socioeconomic status. We have a significant opportunity in Brighton to love and welcome a variety of people.



“When I left home to attend Nazareth College, finding a new church was my priority. Although Northridge was twenty minutes from our campus, I drove there up to three times per week for Sunday morning service, Community Group, and NYA events. **My church home has been the biggest source of joy and encouragement since I've been in college, and many of my friends have said the same.**

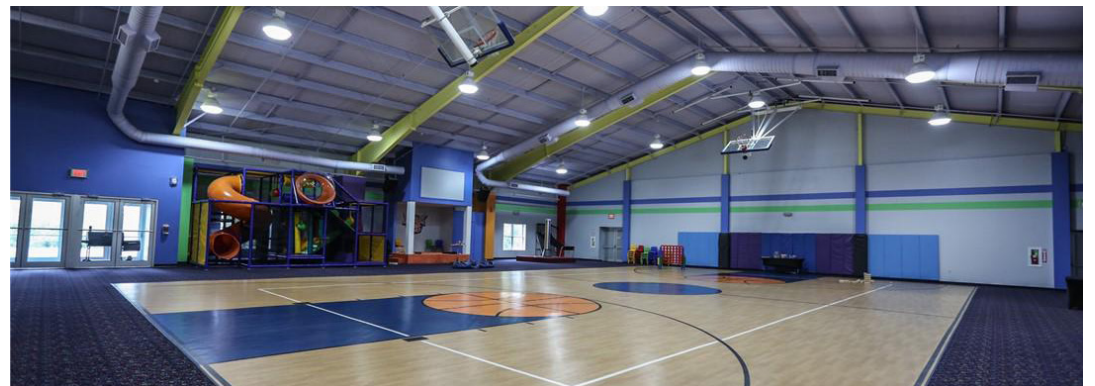
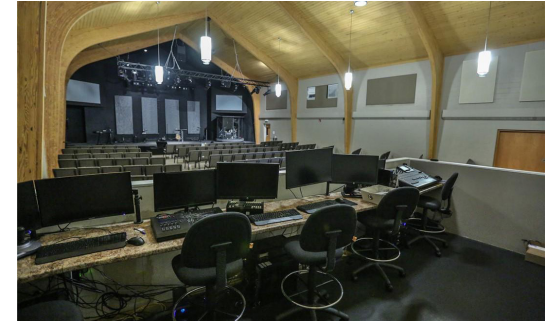
My weekly trips turned into carpools and, eventually, a van transport system to get our students to church. **Northridge has contributed to our continually growing Christian community at Nazareth. I'm so excited that we will have a closer location for our group to keep growing in faith and numbers.**

- Kiley C.





# Brighton Campus



# STRETCH YOUR Faith

For the gospel to permeate the Rochester area, bold faith needs to be combined with committed action. The Mountain Mover initiative is a two-year commitment in four areas:

- 1. Sacrificial Giving** to fully fund a new missional outpost and home for the hopeless.
- 2. Going** to join the Brighton Campus and be a light in the community.
- 3. Serving** in a renewed capacity and dedication.
- 4. Loving** and caring for your neighbor in tangible ways to share the hope of the gospel.

**As you embark on this journey, prayerfully consider where God is leading you to stretch your faith to see mountains move.**



# SACRIFICIAL & GENEROUS Giving

Sacrificial and generous giving is one of the ways we can express our dependence (Matthew 6:25a, 33) and gratitude (2 Corinthians 9:11) to God for how He has been generous to us. In 2 Corinthians 9, Paul calls for the church to “sow bountifully” into the Kingdom of God.



As part of the Mountain Mover initiative, God is calling us to stretch our faith by funding a new missional outpost and home for the hopeless through the Brighton Campus. God put the opportunity to purchase 2090 S. Clinton in front of us, and we desire to steward this opportunity wisely.

*My Community Group (seven of us including me) are ecstatic about the Brighton Campus. Most of us attended the Henrietta Campus and are currently online since the other two physical locations are quite a drive for us. Our hearts are more than ready to attend in person. We have family and friends who also plan to come or are more likely to accept an invite if the location is closer to home.*

-Michele T.



***Having a closer church location makes Sundays feel more like home.** We're able to invite people in our area more easily, allowing them to experience the welcoming nature of Northridge and get plugged into a local church that is connected to our direct community. Attending a smaller, more intimate location forges a sense of family that's like no other, where we are truly able to do life together."*

-Emily W.



**The goal of this giving initiative is to fully fund all the costs associated with the building to create a fresh space people can call home.**

While the building is an excellent overall space, critical renovations and upgrades are necessary to make it ready. These include:

- ◆ Our Purchase Price: \$1.6 million
- ◆ Renovation Estimates: \$1.1 million
  - ◆ Fix the roof and HVAC system
  - ◆ Replace windows, flooring, lights, and ceilings
  - ◆ Many upgrades for energy purposes
  - ◆ Audiovisual package
- ◆ 10% to BEYOND partners: \$300,000
- ◆ Total Cost: \$3 million

**The ability to not carry a long-term mortgage on the property will mean we will avoid paying approximately \$1 million in interest payments, allowing more resources to be used for ministry.**



### **We Practice Generosity Because:**

1. God has been generous to us.
2. It expresses our dependence on God.
3. We bless others.
4. We help meet ministry needs.
5. We discover true and lasting joy.



## 10% TO BEYOND

We want to live out sacrificial generosity throughout our church. As part of the Mountain Mover initiative, we want our impact to go beyond our walls like we never have before in any of our previous giving initiatives.

**10% of all the money that comes in through the Mountain Mover Giving Initiative will be given as a tithe to our Beyond partners** as we seek to strengthen families, end poverty, and seek justice in the name of the gospel.

Additionally, **office space within the new Brighton Campus will be available to our Beyond partners to use rent-free** as a part of this initiative.

This allows us to support our Beyond partners in ways we never have before. To learn more about Beyond and the partners we support, visit

**[NorthridgeRochester.com/Beyond](http://NorthridgeRochester.com/Beyond).**

# GIVING STEPS

The Giving Steps is a tool designed to help you examine the attitude of your heart and personal growth in generosity. Each step represents growth in a lifestyle of generosity and sacrifice. The Bible encourages us to grow in every aspect of our spiritual lives, including in the grace of giving.

## FIRST-TIME GIVER

*(Matthew 6:25-26)*

Becoming a First-time Giver is a bold first step. You decide to trust God with a piece of what He has given to you in response to God's teaching or prompting of the Holy Spirit to test your faith.

## OCCASIONAL GIVER

*(2 Corinthians 9:6-8)*

Occasional Givers, you choose to give on a non-regular basis, whether you are compelled by God's teaching, a moment of thanksgiving, or spontaneous generosity.

## CONSISTENT GIVER

*(Proverbs 11:24-25)*

Consistent Givers, you give something and give it consistently to exercise the privilege and discipline of regular giving.

## INTENTIONAL GIVER

*(2 Corinthians 9:9-15)*

Intentional Givers, you think about giving in relation to other things on which you spend money. Giving becomes a purposeful choice that reflects how you prioritize your spending.

## ABUNDANT GIVER

*(2 Corinthians 8:7)*

Abundant Givers, you recognize the magnitude of all God has entrusted to you and choose to honor God with 100% of your resources. Your generosity governs your budget decisions as you seek to make long-term goals to give abundantly.



# HOW TO DECIDE WHAT TO Commit

---

The decision of “How much should I commit to the Mountain Mover Giving Initiative” is personal. No one can make that decision for you. As you approach the decision, we encourage you to:

## Reach Out to God

Prayerfully seek God’s guidance as you make your commitment decision.

## Evaluate Your Resources

Consider everything God has put under your stewardship.

## Nail Down the Specifics

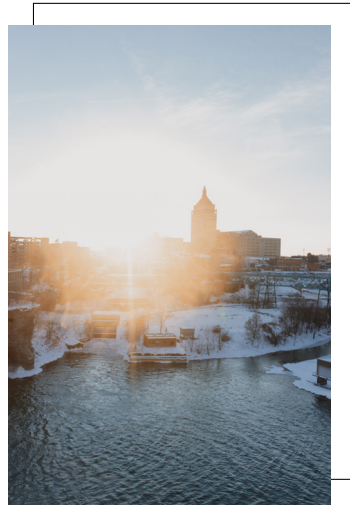
Determine specifically how your resources can be used to compile a generous contribution.

## Educate Yourself

Consider “out of the box” ways to increase your contribution.

## Walk by Faith

Determine your best commitment and trust God to help you successfully fulfill it.



## PRACTICAL STRATEGIES:

### Practice Priority Budgeting

Your family may choose to rearrange your financial priorities. By identifying “unnecessary or less important” expenses currently in the budget, your family may free up funds that can become part of their Mountain Mover commitment.

### Redirect Present Expenses

You may have short-term expenses or loans that will soon be settled. Once these commitments are met, the funds, which are already a part of the budget, can be redirected to Mountain Mover.

### Increase Giving With Increased Income

Sometimes, you might be aware of an expected bonus or an upcoming increase in income. You can choose to plan on including these increases in income in your total commitment.

### Donate Assets

You may have stocks, bonds, or other securities that have appreciated in value. These assets can be included in your commitment. There are potential tax advantages to this type of transaction, but there are also potential penalties. Therefore, before making a contribution of this type, we encourage you to consult your CPA, tax attorney, or financial advisor.

### Personal Reflection

Making a contribution to a campaign is not primarily about giving money to a building. It is about taking an active part in the effort to bring about the mission God has given us in saturating Rochester with the gospel by making more and better disciples. Before making your final decision, evaluate the commitment you are planning by considering these questions:

- ◆ Does the amount I am giving require me to trust God?
- ◆ Does the amount I am giving represent a genuine sacrifice to God?
- ◆ Does the amount I am giving accurately express my level of gratefulness for the way Christ and His Church have blessed my family?

# CREATIVE IDEAS FOR THOSE WANTING TO GIVE BUT AREN'T SURE HOW:

You might be seeking more creative ways of identifying funds to include in your commitment. For instance:

- ◆ Sell some collectibles or items you no longer need and donate what you receive for the items.
- ◆ Postpone a large family vacation or a remodeling project and contribute what you would have spent.
- ◆ Get a part-time job and contribute your income from that position.
- ◆ Turn a hobby into a sales venue and contribute the profits.
- ◆ Give up certain indulgences like a regular coffee run or sweets and contribute the savings.
- ◆ Look for opportunities to earn extra money that can be included in your donation to the campaign.



# GIVING STEPS Scenarios

The names and numbers below are hypothetical, but the situations may be similar to the ones you find yourself in right now. Each scenario illustrates how an individual or family might take the next step up the Giving Steps and how they would complete their Mountain Mover generosity worksheet.

## FIRST TIME GIVER

Sam is a new believer. His Community Group leader is encouraging him in several areas of growth in his relationship with God - including trusting God to begin giving. It's a huge step of faith, but Sam plans on committing 5% of his \$35,000 income (\$1,750) for a total 2-year commitment of \$3,500 toward Mountain Mover.

### MY TWO-YEAR GENEROSITY COMMITMENT TO MOUNTAIN MOVER

*(Use this worksheet to calculate your commitment to Mountain Mover)*

\$ <input type="text"/>	STARTING ONE-TIME GIFT
\$ <input type="text" value="3,500"/>	REOCCURRING GIFTS
\$ <input type="text"/>	FUTURE ONE-TIME GIFTS
\$ <input type="text"/>	SECURITIES

MY TWO-YEAR COMMITMENT TO MOUNTAIN MOVER

\$

## MY TWO-YEAR GENEROSITY COMMITMENT TO MOUNTAIN MOVER

(Use this worksheet to calculate your commitment to Mountain Mover)

\$ <input type="text"/>	STARTING ONE-TIME GIFT
\$ 3,000	REOCURRING GIFTS
\$ 2,000	FUTURE ONE-TIME GIFTS
\$ <input type="text"/>	SECURITIES

MY TWO-YEAR COMMITMENT TO MOUNTAIN MOVER

\$ 5,000

## OCCASIONAL GIVER

Maria has been giving to the church for a while, just not very consistently. She believes in the mission of Northridge and isn't opposed to giving; she just struggles to give consistently and hasn't made it a priority. Looking over her recent spending and receipts, she has found several places she can cut back and be intentional about giving consistently. In addition to committing to give a percentage of her income as a regular, scheduled discipline, she plans to make a 2-year giving commitment of 3% of her \$50,000 income. She also has identified her tax return as a way she can give \$2,000 as a one-time gift. She plans to give \$5,000 to Mountain Mover.

## CONSISTENT GIVER

William and Tanya have been faithful in giving to the church at a steady 5%. From their household income, they contribute \$6000 a year to the regular ministry of Northridge. Mountain Mover has challenged them to consider moving up to a full tithing amount of 10% - continuing their regular 5% to the general fund and an additional 5% toward the giving initiative. It will require a bit of adjustment in their lifestyle to give \$12,000 for these two years, but they feel strongly that God would have them do it. Also, they've been saving for a big trip but have decided to give the \$2000 in that account instead. William & Tanya are now planning to give \$14,000 to Mountain Mover over the next two years.

## MY TWO-YEAR GENEROSITY COMMITMENT TO MOUNTAIN MOVER

(Use this worksheet to calculate your commitment to Mountain Mover)

\$ 2,000	STARTING ONE-TIME GIFT
\$ 12,000	REOCURRING GIFTS
\$ <input type="text"/>	FUTURE ONE-TIME GIFTS
\$ <input type="text"/>	SECURITIES

MY TWO-YEAR COMMITMENT TO MOUNTAIN MOVER

\$ 14,000

## MY TWO-YEAR GENEROSITY COMMITMENT TO MOUNTAIN MOVER

(Use this worksheet to calculate your commitment to Mountain Mover)

\$ <input type="text"/>	STARTING ONE-TIME GIFT
\$ 6,000	RECURRING GIFTS
\$ <input type="text"/>	FUTURE ONE-TIME GIFTS
\$ 30,000	SECURITIES

MY TWO-YEAR COMMITMENT TO MOUNTAIN MOVER

\$ 36,000

## INTENTIONAL GIVER

John has faithfully been tithing 10% of his \$75,000 income for many years and sees God provide for his needs. He loves his church and its passion for BEYOND and saturating Rochester with the Gospel. John is committing an additional 4% of his annual income toward the Mountain Mover initiative and some stock he has seen grow over the years to give a one-time gift of \$30,000. Over two years, he looks forward to being able to commit \$36,000.

## ABUNDANT GIVER

Eden is active at Northridge and sacrificially gives her time, talents, and resources. She has given 15% of her \$90,000 income to the church in recent years. Still, after examining her finances and praying about her legacy, she is challenged to contribute significantly to Mountain Mover and add 3% to the campaign. She typically receives a \$3,000 bonus each year-end. She feels prompted to contribute that additional income for the next two years. She has some investments that have accumulated in the past years that she has decided God wants her to add to her gift. Eden is excited to give \$49,400 to Mountain Mover.

## MY TWO-YEAR GENEROSITY COMMITMENT TO MOUNTAIN MOVER

(Use this worksheet to calculate your commitment to Mountain Mover)

\$ <input type="text"/>	STARTING ONE-TIME GIFT
\$ 5,400	RECURRING GIFTS
\$ 6,000	FUTURE ONE-TIME GIFTS
\$ 38,000	SECURITIES

MY TWO-YEAR COMMITMENT TO MOUNTAIN MOVER

\$ 49,400

# GIVING Worksheet

Prayerfully consider what the Lord would have you give. Please use the "Two-Year Generosity" worksheet below and the "What Will It Take?" chart as guides.  
**Each gift is an act of obedience, faith, and trust.**

## MY TWO-YEAR GENEROSITY COMMITMENT TO MOUNTAIN MOVER

(Use this worksheet to calculate your commitment to Mountain Mover)

\$  STARTING ONE-TIME GIFT

\$  REOCCURRING GIFTS

\$  FUTURE ONE-TIME GIFTS

\$  SECURITIES

MY TWO-YEAR COMMITMENT TO MOUNTAIN MOVER

= \$


# WHAT WILL IT Take?

GIFTS NEEDED	2-Year Commitment	Annual Gift	Monthly Commitment	Weekly Commitment	Gift Level Total
1	\$200,000	\$100,000	\$8,333	\$1,923	\$200,000
1	\$150,000	\$75,000	\$6,250	\$1,442	\$150,000
2	\$72,000	\$36,000	\$3,000	\$692	\$144,000
3	\$48,000	\$24,000	\$2,000	\$462	\$144,000
10	\$36,000	\$18,000	\$1,500	\$346	\$360,000
15	\$24,000	\$12,000	\$1,000	\$231	\$360,000
17	\$18,000	\$9,000	\$750	\$173	\$306,000
19	\$12,000	\$6,000	\$500	\$115	\$228,000
20	\$8,400	\$4,200	\$350	\$81	\$168,000
25	\$6,000	\$3,000	\$250	\$58	\$150,000
50	\$4,800	\$2,400	\$200	\$46	\$240,000
125	\$3,600	\$1,800	\$150	\$35	\$450,000
MANY	\$1,800	\$900	\$75	\$17	\$100,000
Grand Total:					\$3,000,000

# COMMITMENT CARD

Cards will be received during Sunday morning services on March 26th.

# 4 WAYS TO Give




## MOUNTAIN MOVER

Knowing that God can do more than all we ask or imagine, in faith I/we intend to give to the Northridge Church Mountain Mover initiative over and above my/our regular offerings.

Please indicate on the line below what you and/or your family plan to give for your gift.

Total Mountain Mover 2 Year Gift: \_\_\_\_\_



*For your convenience, this giving chart has been included to estimate your total gift:*

2-Year Commitment	Annual Gift of	Monthly Commitment	Weekly Commitment
\$200,000	\$100,000	\$8,333	\$1,923
\$150,000	\$75,000	\$6,250	\$1,442
\$72,000	\$36,000	\$3,000	\$692
\$48,000	\$24,000	\$2,000	\$462
\$36,000	\$18,000	\$1,500	\$346
\$24,000	\$12,000	\$1,000	\$231
\$18,000	\$9,000	\$750	\$173
\$12,000	\$6,000	\$500	\$115
\$8,400	\$4,200	\$350	\$81
\$6,000	\$3,000	\$250	\$58
\$4,800	\$2,400	\$200	\$46
\$3,600	\$1,800	\$150	\$35
\$1,800	\$900	\$75	\$17



## MOUNTAIN MOVER

WE BELIEVE THE BIBLE WHEN IT SAYS THOSE WHO SOW GENEROUSLY WILL REAP GENEROUSLY (2 CORINTHIANS 9:6). WE ARE ASKING FOR JOYFUL, SACRIFICIAL GIFTS, YET WE RECOGNIZE THAT THE REWARDS WILL BE GREATER THAN THE SACRIFICE. THE MOUNTAIN MOVER INITIATIVE WILL ALLOW US TO WORK TOGETHER TO EXPAND OUR MISSION AND CREATE A STRONG LEGACY FOR THE FUTURE.

LAST NAME: \_\_\_\_\_ FIRST NAME: \_\_\_\_\_

STREET ADDRESS: \_\_\_\_\_

CITY: \_\_\_\_\_ STATE: \_\_\_\_\_ ZIP: \_\_\_\_\_

PHONE: \_\_\_\_\_ EMAIL: \_\_\_\_\_

SIGNATURE: \_\_\_\_\_




### IN SERVICE

Drop an envelope or check marked Mountain Mover in the offering bucket in the back of the auditorium.



### ONLINE

Schedule giving at [NorthridgeRochester.com/Give](http://NorthridgeRochester.com/Give)



### TEXT

Text Mountain Mover to 585000 to receive instructions on how to set up text-to-give.



### ASSETS

Learn about the benefits of giving appreciated assets. Contact [jmapes@northridgerochester.com](mailto:jmapes@northridgerochester.com)

# Going



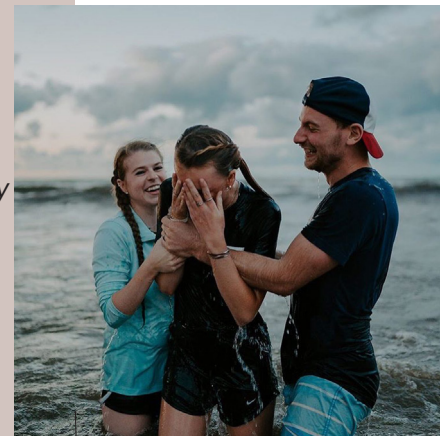
Jesus, in Matthew 28:19, commissions His disciples to **go**, to share the hope of the gospel with those who haven't received it by making more and better disciples. Perhaps you live locally to the Brighton Campus, and God is moving you to go and be part of this team. Commit to serving there and put down roots. Attend regularly with your family. Invite your friends, neighbors, and classmates. Create space for guests at our current campuses and help to make the new location feel like family as we welcome others home.

## HOW DO I JOIN THE BRIGHTON CAMPUS?

1. Go to [iwant.info](http://iwant.info) and express interest.
2. A member of the team will reach out.
3. Help to prepare the building.
  - ◆ Think about your time, talents, and how you can help.
  - ◆ Pull your Community Group together and do a service project there.
4. Go for one year or fully commit to attending and serving at the campus.



*I have had the privilege and honor to serve in Kids Min, NYM, set up and tear down, Starting Point, Community Groups, and most recently, NYA. I've worked alongside many of you and seen what you're best at, and have been inspired by your families, marriages, faith, and heart for others. God has used so many of you to influence the man and husband I am today, and I can't thank you enough. Northridge truly is my family, and as we step out in faith to see Brighton saturated with the gospel, I'm asking you to do this with me. Family is one of the sweetest parts of life — celebrating, crying, praying, and dreaming together. I can't do this without you and I would never want to.*



*- Noah Bixby,  
Brighton Campus Pastor*

# Serving

Serving is about creating a place for people to feel at home and to grow in their faith. Are you serving regularly at your campus? **As volunteers start going to Brighton, there will be space for you to step in and serve at Rochester and Webster.** God has purposefully given you gifts to use for the good of His Kingdom and glory. Is now the time for you to step up and serve?

# HOW DO I START OR INCREASE MY SERVING?



1. Evaluate what gifts and passions you have.
2. Connect with your current team leader or someone at NEXT.
3. Fill out the form on [iwant.info](http://iwant.info).
4. A member of the team will reach out.
5. You'll get plugged in!

*"My husband Dan and I attended Northridge for years and loved it, **but we were comfortably on the sidelines.** We didn't realize what it felt like to really be part of an authentic community until we joined the Henrietta Campus. Being part of a smaller, more tight-knit group really changed us. **We became involved in ways we didn't know we had in us and found joy in serving alongside people who were truly a part of our lives.** We made deep connections with people who are now more like family than friends. **We grew in our faith in unexpected and lasting ways.** It was a season that will forever be special to us. The Brighton Campus is so exciting to us because we long to be part of a small community like that again, and we can't wait to see how God works through this next phase of His Church."*

-Rachel L.



# Loving

It doesn't matter what part of Rochester you live in or if you attend online, **you can help spread the good news of Jesus and saturate our city and world with the gospel.** Who do you know that you can be **praying for, investing in, and inviting?** How can you get to know and serve your neighbors in tangible ways? Who can you offer to pray for at work or school? Who can you invite to your home to share a meal? Regardless of where you live, God has put you in your neighborhood, school, and workplace to share His love with the people around you.

"'Love the Lord your God with all your heart and with all your soul and with all your mind.' This is the first and greatest commandment. And the second is like it: 'Love your neighbor as yourself.'"

Matthew 22:37-39

## HOW DO I START LOVING MY NEIGHBORS WELL?

### 1. Pray

- ◆ Draw a map of those in your neighborhood. Write down their names and pray over them.
- ◆ Create a list of people you rub shoulders with regularly through work, school, kids' activities, etc
- ◆ Find a local news source and pray over the needs of our community.



## 2. Invest

- ◆ Have intentional conversations.
  - ◆ Be the one to reach out.
  - ◆ Ask good questions.
  - ◆ Follow up.
- ◆ Share your story.
- ◆ See the need, meet the need.
  - ◆ Listen to your Community Group, family, friends, or neighbors and learn about their needs.
  - ◆ Respond as often as you can!

## 3. Invite

- ◆ Invite others into a conversation.
  - ◆ Meet them for coffee.
- ◆ Invite them into your home.
  - ◆ Share a meal.
- ◆ Invite people to your Community Group.
  - ◆ Create a welcoming environment in your group to love and care for others.
- ◆ Invite them to church.
  - ◆ Introduce them to our family of believers and allow them to belong in community.



”

*“A Northridge campus close to our home has provided us a great opportunity to invite family and friends from our neighborhood. Five years ago, while I was in labor with our third child, my husband and I drove around the neighborhood after a snowstorm helping neighbors with fallen trees (trying to pass time before heading to the hospital). After helping a friend who was a single mom from Northridge, we headed to another neighbor who we instantly connected with. While cutting down their tree they mentioned they were searching for a new church. We invited them to Northridge, and they quickly connected and plugged into serving. For the last few years, we have enjoyed co-leading Community Group together. During our time at Northridge together, we have teamed up to invite other neighbors and friends to the Webster Campus. Having a Northridge campus nearby has allowed us to include others in our community.”*

-Keaghan H.



# PRAYER Challenge

You can use the small moments of your day to pray for big movements of God. Here are two ways you can commit to prayer:

## Prayer Cards

1. Receive a pack of the 28 day prayer cards or notifications through the app beginning March 6th.
2. Use the cards as a guide for your prayers.
3. Start your day with prayer or set an alarm each day for the same time as a reminder.
4. Pray with your Community Group.

## Pray as You Drive

1. Take a prayer reminder keychain.
2. Commit to praying while you drive through the greater Rochester area.
3. **Turn an ordinary routine into meaningful prayer moments for the gospel to impact your community.**

“This is the confidence we have in approaching God: that if we ask anything according to his will, he hears us.”

- 1 John 5:14



# FAQ

---

## GROWTH OF OUR CHURCH

### **Do we need another campus?**

Yes. The Rochester Campus is larger and growing faster than it was when we launched each of our previous campuses. Many people who still attend Northridge live in areas where we shut campuses. We want to help them saturate their areas with the Gospel.

## BUILDING & SURROUNDING AREA

### **Is an auditorium that seats 250 large enough?**

We prefer a smaller campus as it feels more like family. We are excited about the opportunity to offer a smaller church atmosphere. Brighton should be able to handle 600-700 people on a Sunday morning over the course of three services, matching our current Rochester service times.

### **What's the parking arrangement?**

The church has a shared parking arrangement with the Gastroenterology Group of Rochester. The church can use all the parking after 6 PM during the week and all day on weekends. The medical facility uses parking during business hours on weekdays.

### **What are the demographics of the area around the church?**

The Brighton Campus could potentially represent our youngest campus. If you look at the average age within a 10-minute drive of each of our campuses, our Webster Campus' average age is 42, Rochester's is 36, and Brighton's could be 33. Brighton represents an opportunity to impact the next generation in ways we currently are not.

This campus is within a 15-minute drive of many college campuses (including UR, RIT, and MCC), the South Wedge, and lower-income pockets of the city of Rochester.

### **What happened to the church that is selling the building?**

The church was doing well before Covid, but they didn't make it back together as a church after the mandatory closings. Additionally, the church's pastor decided God was leading him out of pastoral ministry.

### **Did you consider other properties?**

Yes! We considered several other properties. We even looked into purchasing the Regal movie theater that our Henrietta Campus used to meet in when it went on the market. It wasn't viable as it was valued at six times the Brighton building purchase price and had more than triple the space we needed. Regal is also closing its Greece Ridge Mall location, but again, this is more space than we need, and the mall owns this location.

## THE FINANCIALS

### **How much do we save in interest if we fully fund this giving initiative?**

If Northridge takes out a 10-year loan to cover the purchase and upgrades in Brighton, we would pay nearly \$1 million in bank interest!

### **Will the financial goal of Mountain Mover be to fully fund and pay off this Brighton Campus (as opposed to Webster, where we carry a mortgage)?**

Our goal is to pay off the mortgage we're taking out for this new campus as quickly as incoming funds allow us.

### How does the cost compare to the Webster building?

The Brighton building is less expensive than Webster because we are updating an existing church building rather than completing a full buildout.

Cost per sq ft. - Brighton is 38% less expensive - 4 years later

- ◆ Brighton: \$107
- ◆ Webster: \$173

### Can we afford the Brighton Campus in our 2023 budget?

Our 2023 budget has operating expenses tied to Brighton built into it. Through Mountain Mover, exactly like we've done in the past, we will be covering part of personnel expenses for the first 1-2 years of the Brighton Campus.

### Do we still have dollars left over from #forROC?

We have nearly \$500,000 left over from the #forROC Campaign that we will use toward the Brighton Campus.

### What if we exceed our 3 million dollar goal?

If we exceed our \$3 million goal so that we are debt free in Brighton, our Stewardship Team will use any additional funds to help pay down the principal tied to our Webster Campus loans, saving the church thousands in interest payments moving forward.



## MARCH SCHEDULE:

**5th:** Launch Sunday - Mountain Mover Series Begins

**6th:** Daily Prayer & Scripture Reading Begins

**12th:** Night of Prayer at Brighton Campus

**26th:** Commitment Sunday

**March 26, 2023 - March 21, 2025:** Two-Year Giving Period

SCHEDULE

# No More Worry

## SERMON NOTES

### Matthew 17:20-21

Has God \_\_\_\_\_ moving mountains or has our \_\_\_\_\_ become so small that mountains stopped moving?

**Our vision: is to \_\_\_\_\_ the greater Rochester area with the \_\_\_\_\_.**

### Two Goals for This Series:

1. To \_\_\_\_\_ our faith through sacrificial giving
2. To \_\_\_\_\_ the way to bring the gospel to \_\_\_\_\_ community in Rochester

Matthew 6:25-30

The \_\_\_\_\_ of worry stems from \_\_\_\_\_ faith.

Matthew 6:31-32

When we worry, we \_\_\_\_\_ like \_\_\_\_\_.

### Two Mentalities of Unbelievers:

1. It all \_\_\_\_\_ on me
2. This is \_\_\_\_\_ there is in \_\_\_\_\_

Matthew 6:33-34

\_\_\_\_\_ your worry with \_\_\_\_\_ His kingdom.

### Where Do We Start?

- ◆ \_\_\_\_\_: Whose kingdom are you living for?
- ◆ \_\_\_\_\_: What would it look like to build God's Kingdom in this moment?



## COMMUNITY GROUP

### QUESTIONS

1. Share your name and answer the following question:
  - ◆ If you had to choose one meal for the rest of your life, and it could only be something currently in your fridge or pantry, what would you eat?
2. What Scripture, story, or idea from Sunday's message stood out to you most?
3. Read **Matthew 6:25-34**.
  - ◆ What are you encouraged or challenged by in this passage?
  - ◆ According to this passage, what do our worries reveal about our faith?
4. Reread **Matthew 6:31-32**.
  - ◆ Based on these verses, how should Christians respond to their worries differently than unbelievers? Why?
5. Reread **Matthew 6:33-34**.
  - ◆ What might replacing our worries with seeking God's kingdom look like?
6. What are you worried about right now? What would it look like for you to apply this passage to your worries?
7. Where do you need to stop building your kingdom and start building God's?

# For Such a Time as This

## SERMON NOTES

Matthew 8:23-27

When we truly \_\_\_\_\_ who God is, we realize He \_\_\_\_\_ the outcome.

**Obedience is our responsibility; the outcome is God's.**

Matthew 8:26

We don't trust God because of \_\_\_\_\_ we are but because of \_\_\_\_\_ He is.

Matthew 8:27

Why are you so \_\_\_\_\_?

Matthew 8:26

*"He replied, "You of little faith, why are you so afraid?"*

Our greatest \_\_\_\_\_ are the things we find hardest to \_\_\_\_\_ God with.

**If you knew Jesus was coming back in 10 years what would you do today?**

Matthew 16:13-20

The \_\_\_\_\_ of the church is the truth that Jesus Christ is the \_\_\_\_\_ of the living God.

**Who wants to come and build the church of Jesus Christ, the Son of the living God, in Brighton?**



COMMUNITY GROUP

QUESTIONS

1. Share your name and answer the following question:
  - ◆ When was a time in your life you took a risk or did something scary? What happened?
2. Looking at your sermon notes, what statement or question are you most challenged or convicted by?
3. Read **Matthew 8:23-27**.
  - ◆ What do you think of Jesus' response to the storm and His disciples?
  - ◆ How does this story impact how you are processing your current circumstances?
4. Noah said, *"Our greatest fears are the things we find hardest to trust God with."*
  - ◆ What is hardest for you to trust God with? What are your greatest fears?
5. Noah asked, *"If you knew Jesus was coming back in 10 years or even 1 year, what would you do today?"*
  - ◆ How would you answer that question?
6. We are challenging our church to do four things as we prepare to launch our Brighton Campus: Give sacrificially, Go to Brighton, Serve the church, Love and care for our neighbors.
  - ◆ What is God calling you to do?

# Let the Stretching Begin

## SERMON NOTES

**Many Christians believe \_\_\_\_\_ have happened but \_\_\_\_\_ if they can still happen today.**

Matthew 14:22-28

Have you put your \_\_\_\_\_ to the \_\_\_\_\_?

*"The problem with Christianity is not that it has been tried and found wanting, but that it has been found difficult and left untried."* -G.K. Chesterton

Matthew 14:29

Jesus \_\_\_\_\_ us to \_\_\_\_\_.

Matthew 14:29-31

**Faith is all about your trust in:**

1. \_\_\_\_\_ God is
2. What He has \_\_\_\_\_
3. What He can \_\_\_\_\_

Matthew 14:32-33

**Will you \_\_\_\_\_ out in faith?**

This week would you ask,  
"God, would You \_\_\_\_\_ my faith?"



## COMMUNITY GROUP

## QUESTIONS

1. Share your name and answer the following question:
  - ◆ What is something you accomplished that you had a hard time believing would happen?
2. If you had to boil down Sunday's message to one thing, what is most important for us to remember?
3. At the beginning of Drew's message, he said, "Many Christians believe that miracles have happened, but wonder if they can still happen today."
  - ◆ Why is that? Why do we think this way?
4. Read **Matthew 14:22-33**.
  - ◆ What part of this story stands out to you most?
5. Reread **Matthew 14:29-31**.
  - ◆ What can we learn from Jesus' response to Peter?
  - ◆ If Jesus asked the same question to you, "why do you doubt?" how would you answer?
6. Drew challenged those of us who were part of previous campus launches to stretch our faith again.
  - ◆ Share with the group what that experience was like for you last time? How did God use that to strengthen your faith?
7. Drew ended his message by challenging us to pray, "God, would you stretch my faith?"
  - ◆ Where is God leading you to step out of your comfort zone and stretch your faith?

# Mountains Still Move

## SERMON NOTES

Matthew 17:14-16

Matthew 17:19

Matthew 17:20

*He replied, "Because you have so little faith. Truly I tell you, if you have faith as small as a mustard seed, you can say to this mountain, 'Move from here to there,' and it will move. Nothing will be impossible for you."*

**Do you \_\_\_\_\_ that through faith, \_\_\_\_\_ is impossible?**

Faith is \_\_\_\_\_.

Matthew 17:17

"You **unbelieving** and perverse generation..."

**We have a \_\_\_\_\_ before us to \_\_\_\_\_ our belief in God.**

Matthew 17:20



## COMMUNITY GROUP QUESTIONS

1. Share your name and answer the following question:
  - ◆ What is the highest mountain you've ever been to or hiked?
2. How did Sunday's message and service impact you? In what ways were you challenged or encouraged in your faith?
3. Read **Matthew 17:14-20**.
  - ◆ What thoughts or questions does this passage bring to your mind?
  - ◆ In verse 17, Jesus calls out that generation for their lack of faith. In what ways do Christians today show their lack of faith in God?
4. Reread **Matthew 17:20**.
  - ◆ What areas of your life do you long to have more faith in?
5. Where do your actions need to align with your belief that God can do anything?
6. We desire to saturate Rochester with the gospel. If you truly believe no one is beyond God's reach, who are you praying will place their faith in Jesus? What can you do to share your faith with them?

**Spend time praying together for the Brighton Campus launch and the spread of the gospel across our region.**



NORTHRIDGE CHURCH



VISIT  
[NORTHRIDGEROCHESTER.COM/MOUNTAINMOVER](http://NORTHRIDGEROCHESTER.COM/MOUNTAINMOVER)  
FOR MORE INFORMATION.